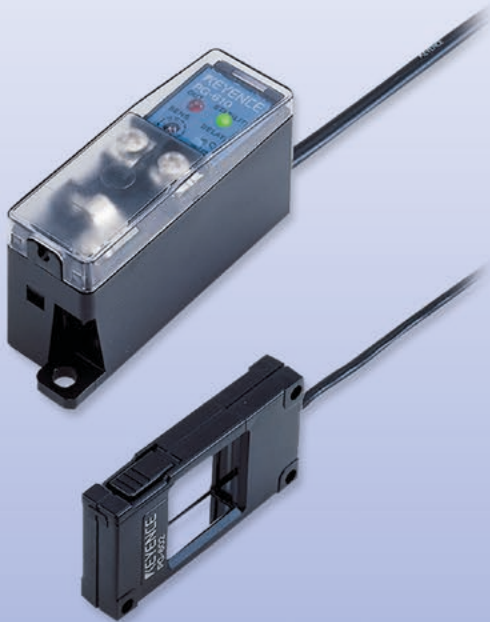


Optical Passage Confirmation Sensors

PG Series



Built-in automatic sensitivity-compensating circuit

The sensitivity of the receiver is automatically adjusted by the built-in compensating circuit, even when the amount of light reaching the receiver is reduced due to dust or debris.

Self-diagnostic output simplifies maintenance

In addition to the stable operation indicator, the PG features an alarm output, which is triggered by a sharp decrease in incident light quantity, or when the sensor cable is disconnected, allowing speedy correction.

OFF-delay time selector switch

Can be set to 0.5 ms or 70 ms.

The sensor head window can be opened or closed

The sensor head can be easily mounted to an installed pipe with no open end.



ASK KEYENCE


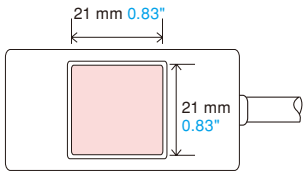

1-888-KEYENCE
www.keyence.com/ASKG



FREE DOWNLOAD

www.keyence.com/DLG

Free downloads for product and technical support are readily available in one convenient location

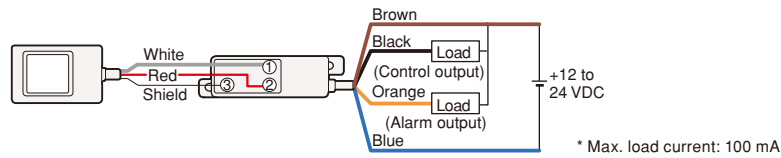
Lineup				
Type	Appearance	Sensor window	Smallest detectable object	Model
Sensor head			0.5 mm 0.02" dia. min. opaque materials	PG-602
Amplifier				PG-610

Specifications

Model	Sensor head	Amplifier	NPN	
				PG-602
				PG-610
Sensor window				21 x 21 mm 0.83"
Smallest detectable object				0.5 mm 0.02" dia. min. opaque materials
Light source				Infrared LED
Sensitivity adjustment				1-turn trimmer
Indicator				Output: Red LED, Stable operation: Green LED
Output ¹	Control output ²			NPN: 100 mA max. (40 V max.) Residual voltage: 1 V max.
	Self-diagnostic output			NPN: 100 mA max. (40 V max.) Residual voltage: 1 V max.
	Response time			0.2 ms
Off-delay time				0.5/70 ms (selectable)
Power supply				12 to 24 VDC ±10%
Current consumption				40 mA max.
Ambient light				Fluorescent lamp: 10,000 lux max., Sunlight: 1,500 lux max.
Ambient temperature				Sensor head: -10 to +60°C (14 to 140°F), Amplifier: -10 to +50°C (14 to 122°F), No freezing
Relative humidity				35 to 85%, No condensation
Housing				Polycarbonate
Weight				Sensor head (including 2-m 6.6' cable): Approx. 40 g, Amplifier (including 3-m 9.8' cable): Approx. 100 g

1. NPN output can easily be converted to PNP output by connecting the optional **OP-5148** PNP Output Converter.
 2. One-shot output (ON when target passes through sensor)

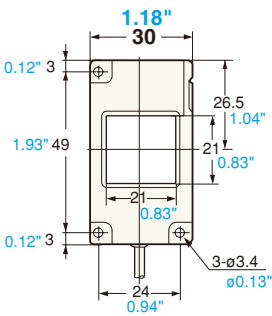
Connections



Dimensions

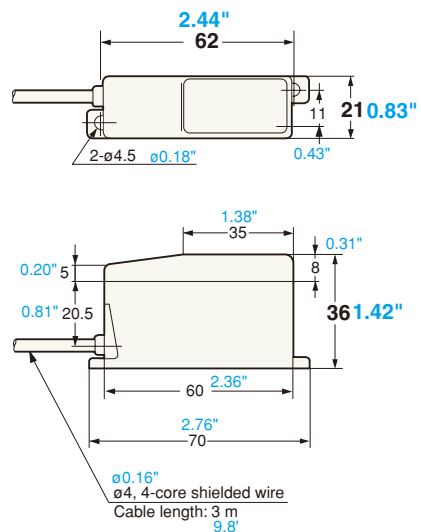
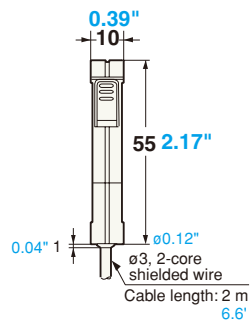
Sensor head

PG-602



Amplifier

PG-610



New Products

Fiberoptic Sensors

Photoelectric Sensors

Proximity Sensors

Safety Equipment

Flow/Pressure/Temperature

Measurement Sensors

Controls

Static Eliminators

Vision Systems

Marking Equipment

Code Readers

Handheld Mobile Computers

Microscopes

Projector/3D Measurement Systems